

---

---

---

## 6.0 WARRANTY

Electromatic Equipment Co., Inc. (Electromatic) warrants to the original purchaser that this product is of merchantable quality and confirms in kind and quality with the descriptions and specifications thereof. Product failure or malfunction arising out of any defect in workmanship or material in the product existing at the time of delivery thereof which manifests itself within one year from the sale of such product, shall be remedied by repair or replacement of such product, at Electromatic's option, except where unauthorized repair, disassembly, tampering, abuse or misapplication has taken place, as determined by Electromatic. All returns for warranty or non-warranty repairs and/or replacement must be authorized by Electromatic, in advance, with all repacking and shipping expenses to the address below to be borne by the purchaser.

THE FOREGOING WARRANTY'S IN LIEU OF ALL OTHER WARRANTIES, EXPRESSED OR IMPLIED, INCLUDING BUT NOT LIMITED TO, THE WARRANTY OF MERCHANTABILITY AND FITNESS FOR ANY PARTICULAR PURPOSE OR APPLICATION. ELECTROMATIC SHALL NOT BE RESPONSIBLE NOR LIABLE FOR ANY CONSEQUENTIAL DAMAGE, OF ANY KIND OR NATURE, RESULTING FROM THE USE OF SUPPLIED EQUIPMENT, WHETHER SUCH DAMAGE OCCURS OR IS DISCOVERED BEFORE, UPON OR AFTER REPLACEMENT OR REPAIR, AND WHETHER OR NOT SUCH DAMAGE IS CAUSED BY MANUFACTURER'S OR SUPPLIER'S NEGLIGENCE WITHIN ONE YEAR FROM INVOICE DATE.

Some State jurisdictions or States do not allow the exclusion or limitation of incidental or consequential damages, so the above limitation may not apply to you. The duration of any implied warranty, including, without limitation, fitness for any particular purpose and merchantability with respect to this product, is limited to the duration of the foregoing warranty. Some states do not allow limitations on how long an implied warranty lasts but, notwithstanding, this warranty, in the absence of such limitations, shall extend for one year from the date of invoice.

Electromatic Equipment Co., Inc.  
600 Oakland Ave. Cedarhurst, NY 11516 - USA  
Tel: 1-800-645-7330 / Tel: 516-295-4300 / Fax: 516-295-4399

Every precaution has been taken in the preparation of this manual. Electromatic assumes no responsibility for errors or omissions. Neither is any liability assumed for damages resulting from the use of information contained herein. Any brand or product names mentioned herein are used for identification purposes only, and are trademarks or registered trademarks of their respective holders.

---

---

---

## CONTENTS

<b>1.0</b>	<b>BASIC DESCRIPTION</b>	2
1.1	Recommended Use	
1.2	Basic Characteristics	
1.3	Care Guidelines	
<b>2.0</b>	<b>PCFE DESCRIPTION</b>	4
<b>3.0</b>	<b>OLED DISPLAY</b>	6
3.1	Language Mode - Keypad Function	
3.2	Unit Mode - Keypad Function	
3.3	Date Mode - Keypad Function:	
3.4	Trac Mode	
3.5	Peak Mode	
3.6	Set Mode	
3.7	Set Mode - Torque & Angle	
3.8	Set Mode – Torque	
3.9	Set Mode - Just Move Preset	
3.10	Just Move	
3.11	Just Angle	
3.12	Preset Mode	
3.13	Preset Mode - Keypad Function	
3.14	Recall Mode	
3.15	Recall Mode - Keypad Function	
3.16	Upload Mode	
3.17	Clear Mode	
<b>4.0</b>	<b>WRENCH CALIBRATION</b>	12
4.1	Calibrate Mode	
4.2	Torque and Angle Calibration	
4.3	Communication to PCFE	
4.4	Communication using USB Cable	
4.5	Wrench Data Transfer Protocol	
<b>5.0</b>	<b>PCFE INSTRUCTIONS</b>	16
5.1	Changing the Password	
5.2	Language	
5.3	PCFE Window	
5.4	Set a Preset using the PCFE	
5.5	Bottom Section of PCFE	
<b>6.0</b>	<b>WARRANTY</b>	20

## 1.0 BASIC DESCRIPTION

These Electronic Torque Tools are "State of the Art" devices, With Intelligent Technology, Organic LED display (OLED). They are Menu Driven with Total Tracability. Demonstrated to have better than 1% Accuracy. They are Simple to Set and Calibrate and come complete with ISO 6789-2003 Certification.

These Torque Tools are, Hand-held Torque Measuring Instruments which provide Precision Accuracy, They have High Repeatability. Presets can be set to provide the user with Visual & Audio Signal's during Torque measurements. Supplied with visual Low Battery Indicator. Use the wrench's for Preset Value Approach, Fastener Overload, Range Overload, Maximum Mechanical Overload.

### 1.1 Recommended Use

The Electronic Torque Tools are specifically designed for use in all Industrial Sectors and Applications where High Accuracy and Repeatability combined with a Complete Torque Data Management & Control System are Standard Requirements.

### 1.2 Basic Characteristics

- Accuracy: Right hand side torque = 1%, Left hand side = 1% of Actual Reading
- Resolution: 0.05 to 50Nm & 0.1 to 1000Nm
- Alarms: Preset Value Approach, Fastener Overload, Range Overload, Mechanical Overload, Low Battery, Memory Full.
- Memory Capacity: 2094 Values
- Battery Life: Sleep Mode 5,000 Hrs, Operational Mode 160 Hrs.

## 5.5 Bottom Section of PCFE

The lower section of the PCFE allows the user to view stored results from the wrench. These results can then be saved as an Excel file for further analysis and to offer the user complete traceability of their torque measurements.

Each row will display the following; Time and date of Torque operation, Torque value and units, If it's a Preset result then the Minimum and Maximum tolerances are displayed along with the nominal setting.

The "Type" Column will display the function that was been used for the Torque operation, In the Example below you can see Peak and Preset.

No.	Loc.	Date & Time	Torque Value	Preset No.	Preset Min	Preset Nominal	Preset Max	Units	Type
1	1	09.02 17:21	10.2	1	10	10.1	10.2	Nm	Preset
2	2	09.02 17:21	11.1	1	10	10.1	10.2	Nm	Preset
3	3	09.02 17:21	10.3	1	10	10.1	10.2	Nm	Preset
4	4	10.02 18:48	-17.5					Nm	Peak
5	5	10.02 18:53	17.4					Nm	Peak
6	6	10.02 18:53	21.1					Nm	Peak

Continuous Upload

Upload All

Clear Wrench Data

Clear Results

Unit Conversion

Save Results

Port: COM1 opened | Wrench connected, software version 4.03 | Idle

**Continuous Upload:** When the wrench is connected to the PCFE and this is selected then the user can take readings and by pressing confirm on the wrench the result will be automatically up dated to the PCFE

**Upload All:** Once the wrench is connected to the PCFE, selecting this option will upload all the wrench stored measurements to the PCFE

**Clear Wrench Data:** Selecting this option will clear the stored results from the wrench memory

**Clear Results:** Selecting this button on the PCFE will clear the displayed PCFE results

**Unit Conversion:** Selecting this button allows the user to convert the displayed PCFE readings between Nm, cNm, lbft, lbins, mkg and cmkg

Wrench Serial No: Demo Model: 2017 Make: [ ]

Wrench Span: 17 Span Units: Nm

Current Settings  
 Mode: TRACK Units: Nm Language: English  
 Timeout (min): 2 2nd Point (deg): 3

Calibration L: 101 199 597 986 R: 98 196 588 979  
 Date: 26.01.2010 Period (in days): 365

Buttons: Activate Calibration, Reset the Wrench, Store to Wrench, Power off the Wrench

Wrench Span and units - Change these and tool must be re-calibrated

#### 5.4 Set a Preset using the PCFE

1. Ensure the wrench is connected to the PCFE software
2. Select the preset number or location from 1 to 99 you wish to set
3. When the pop up window appears, fill in required fields and press OK
4. Select Store to wrench and the data is written to the wrench
5. Select Preset option on the wrench and select the preset required

Presets

No.	Nominal	Min	Max	Units
1				
2				
3				
4				
5				
6				
7				
8				
9				

Set Preset Values

Nominal: 20 Min: 19.5 Max: 20.5  
 Units: Nm O.K.

#### 1.3 Care Guidelines

These Instruments should be handled with care. Do not subject to Torque Loads in excess of the Model Range. Do not use Tool to loosen fasteners tightened beyond Max Tool Capacity - Never apply extensions to Tool without contacting your supplier.

Do not Drop or Subject to Impact Blows - Provide adequate storage to Protect from Damage - Adhere to Safety Instructions

#### Changing the Battery on Wrenches - Note: Battery life should last 160hrs+

1. Unscrew the metal End Cap on the handle of the wrench.
2. Remove the four AAA cell batteries and replace with new.
3. Screw back the metal End cap.
4. Check to ensure the date and time are correct

#### Ratchet head guidelines

1. Store in a dry location
2. Oil Frequently to prevent Ratchet head seizing
3. Do not exceed specified torques
4. Do not use external forces on Ratchet ( i.e. Hammer)

Max Torque for 1/4" Ratchet = 30 Nm

Max Torque for 3/8" Ratchet = 135 Nm

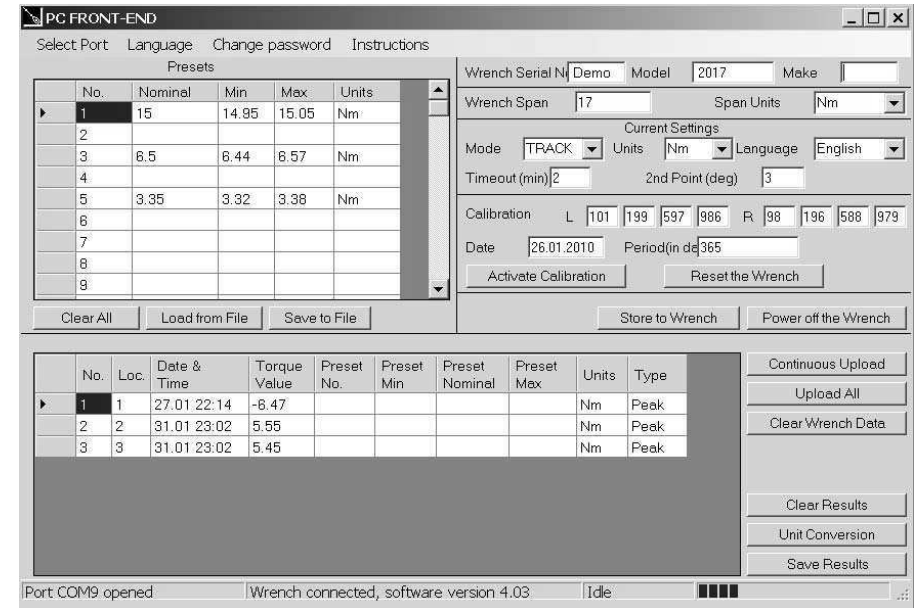
Max Torque for 1/2" Ratchet = 340 Nm

## 2.0 PCFE DESCRIPTION

- Select port:** select communication port you wish to use to communicate with the wrench
- Change password:** Type current password. Type new password. Confirm new password
- Current mode:** Select mode you wish wrench to operate in. Selection will take effect after data is stored using 'store to wrench button'
- Current units:** Select the units you wish wrench to operate in. Selection will take effect after data is stored using 'store to wrench button'
- Current language:** Select the language you wish wrench to operate in. Selection will take effect after data is stored using 'store to wrench button'
- Wrench span:** The span of measurement of the wrench for example Span 100Nm would have a range of 2-100Nm.
- Period of calibration:** Set number of days to next calibration or it can be set by number of measurements.
- Calibrated on:** Date of last calibration.
- Activate calibration:** Activates the calibration option in the wrench menu. You must begin calibration before the wrench powers down.
- Default calibration:** Allows wrench reset. All data/settings stored in the wrench will be cleared and default calibration values for the wrench's specific calibration span will be programmed.
- Power off wrench:** Allows soft power down of the wrench.
- Store to wrench:** Store all current pc front settings to wrench. Wrench will automatically power down after store.
- Load from file:** Loads a previously created file containing preset data, into the PCFE front preset window (top left).
- Save to file:** Saves PCFE displayed preset data to file.
- Clear all presets:** Clears presets from the PCFE presets window.
- Set a preset:** Click on any preset location number in the PCFE presets window. Set the required nominal, min, max Tolerance and units. Store settings to the wrench.
- Continuous upload:** Allows real time communication of measurements to the PCFE. Wrench must be connected to the PC.

## 5.3 PCFE Window

The Top half of the PCFE displays Wrench Configuration data, the Bottom section allows the user to manage the stored wrench data.



The right upper half of the PCFE windows, displays data such as Wrench serial Number, Make, Model, Wrench Span and Units of measurement. The date of calibration and the period of calibration are also shown in this section.

The left upper section displays the Presets stored in the wrench - the user can choose to use the PCFE to set the preset's or it can be done manually on the wrench.

The bottom half of the PCFE window displays any stored measurements on the wrench It displays wrench location number, date and time of reading, Torque readings, Preset data, units of measurement and the mode that was used to take the torque measurement.

## 5.0 PCFE INSTRUCTIONS

### 5.1 Changing the Password

Only available in the "Master Version" of the PC Front End.

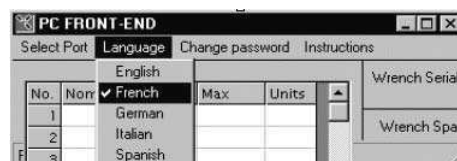
1. Click "Change Password" on the PCFE
2. Enter the "Current Password" ("master" is the default password)
3. Enter New Password in "New Password Box"
4. Enter New Password in "Confirm Password Box" to Confirm.

The Default Password for access to Master PCFE is "master". The Default Password for the Distributor PCFE is "distr". Passwords must be changed by Distributor / Calibration Vendor prior to End User Usage.



### 5.2 Language

The PCFE languages available include; English, French, German, Italian, Polish, Portuguese, Spanish, Russian and Chinese



**Upload all:** Displays all stored wrench measurement data in the the PCFE data window (lower left)

**Clear:** Clears the wrench measurement data displayed on the PC.

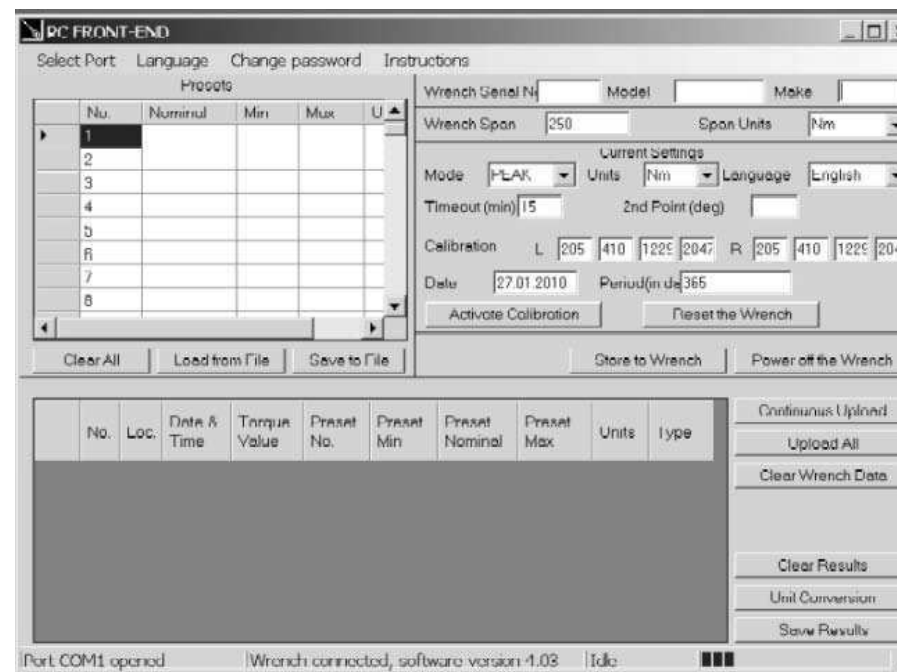
**Clear wrench data:** Clears the wrench measurement data displayed on the PCFE and in the wrench.

**Unit conversion:** Allows user to change the units of the displayed measurement data on the PCFE.

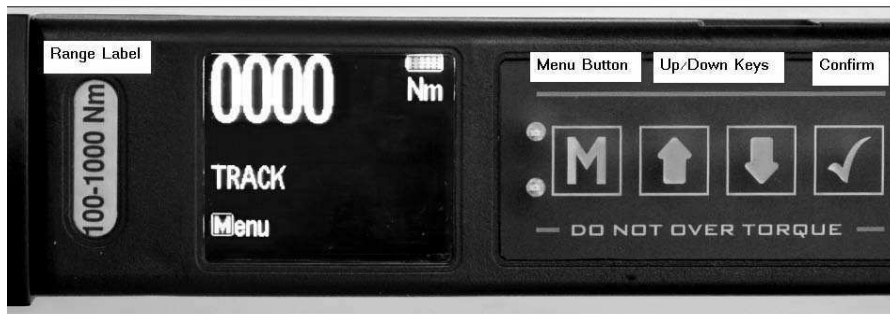
**Sort by preset:** Sort the displayed measurement data and group according to ascending preset numbers.

**Save as an excel file:** Save the current displayed measurement data as an excel file.

The PCFE measurement data window displays stored wrench measurements showing wrench memory location, date and time, torque value.



### 3.0 OLED DISPLAY



Reading starts at 2% of Maximum with an Accuracy of 1% beginning at 10% of Maximum (Threshold to Maximum Span).

Press **MENU** to select the required Menu option **OK** and to select:

#### 3.1 Language Mode - Keypad Function

1. Press **MENU** to Scroll to the Language Menu
2. Press **OK** to enter Lang Menu
3. Press **UP** or **DOWN** to Scroll to Language Required
4. Press **OK** to Confirm operation in this Language.

The Languages of Operation available to the User are; English, Chinese, French, German, Italian, Polish, Portuguese, Russian, Spanish



#### 3.2 Unit Mode - Keypad Function

1. Press **MENU** to Scroll to Units Menu
2. Press **OK** to enter Units Menu
3. Press **UP** or **DOWN** to Scroll to Units Required
4. Press **OK** to confirm selected units

The following Units of Measure are available;  
kgf.cm - kgf.m - cN.m - N.m - ozf.in - lbf.in - lbf.ft

#### Binary Data Transfer

For this the BIN menu item must be selected on the wrench. This is similar to the ASCII data transfer. Returned data format is as follows:  
Day (1 Byte) Month (1 Byte) Hour (1 Byte) Minutes (1 Byte) Torque value (3 Bytes)  
Torque units indicator (1 Byte, see below) Pre-set index (1 Byte) Pre-set high setting (3 Bytes)

#### Pre-set

low setting (3 Bytes) Pre-set nominal setting (3 Bytes) Pre-set units indicator (1 Byte)

There are no separators between the different data items.

The torque and pre-set units are expressed as follows:

#### Units Units indicator byte contents

LBFT 0  
LBIN 1  
OZIN 2  
NM 3  
CNM 4  
MKG 5  
CMKG 6

#### Individual measurement mode

This is initiated by transmission of the single byte hex value 6D Block transfer mode  
This is initiated by the transmission of the single byte binary value 62 The clear to send character is single byte binary 72 When all data is transferred the wrench responds with a single byte binary 65

---

---

---

## 4.5 Wrench Data Transfer Protocol

### General

The data transfer protocol allows measurement data along with the associated date/time stamps and pre-set limits to be transferred from the wrench to other equipment such as a PC or a PLC controller.

Data can be transferred in either ASCII or binary formats and data transfer can be on a measurement by measurement basis or as a complete upload of internal memory.

### Data Link Settings

All data is transferred in 8 bit bytes, single start bit, single stop bit, no parity at a speed of 9600 bits per second.

### ASCII data transfer

For this the ASCII menu item must be selected on the wrench.

### Individual measurement transfer

This is initiated by transmitting the ASCII character 'm' to the wrench. Once the wrench receives this it remains in individual measurement transfer mode until it powers down. Data can be transferred from the wrench whenever the 'Store?' prompt is ticked in peak or preset mode.

The data format is as follows:

Day, Month, Hour, Minutes, Torque value, Torque units, Preset index, Preset high setting, Preset low setting, Preset nominal value, Preset units

Each item is separated by a comma and can be used to feed a CSV spreadsheet file. In peak mode the pre-set values (high, low and nominal) are set at 0.

### Block transfer

This is initiated by transmitting the ASCII character 'b' to the wrench. Once the wrench receives this it transfers the entire data memory contents to the external device. The data is separated into individual measurements containing the date/time stamp, measured value and pre-set data, as described in the data format above.

The first measurement data are transmitted immediately after reception of the 'b' character. After each measurement data are transmitted the wrench waits for a 'ready to receive' signal in the form of the ASCII character 'r'. Once this is received the next measurement data are transmitted. When all memory data has been transmitted the wrench will respond with the ASCII character 'e'.

---

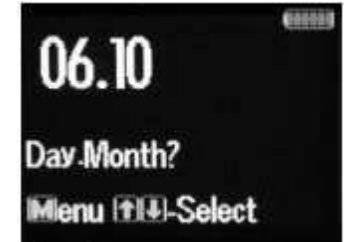
---

---

## 3.3 Date Mode - Keypad Function:

1. Press **MENU** to Scroll to the Date Menu
2. Press **OK** to enter Date Menu
3. Press **UP** or **DOWN** to to Set the min/Hour
4. Press **OK** to Confirm

To Set Day / Month / Year - repeat Steps 3 & 4



## 3.4 Trac Mode

As Torque is applied to the Wrench it will actively display the applied Torque reading to the Max Span of the Device. On removal of the Torque Load the display will return to Zero.

1. Press **MENU** to Scroll to Trac Mode
2. Press **OK** to operate in Trac Mode



## 3.5 Peak Mode

In Peak Mode the Torque Reading will remain Displayed when the Torque Load is removed. The User has the option to store the reading in Memory. If storage of the reading is not required the User may continue to the next measuring task.

1. Press **MENU** to Scroll to Peak Mode
2. Press **OK** to select Peak Mode and then apply Torque
3. Press **OK** to store the Peak Value Recorded if required.

If Storage is not required then apply New Torque



## 3.6 Set Mode

This mode allows the user to set the limits for Torque, Just Move and Torque and angle. The operator can choose to set Torque values by % or by tolerances. The OLED display will be Green approaching Preset tolerances and will change to Red if exceeded.



### 3.7 Set Mode - Torque & Angle

1. Press **MENU** to Scroll to Set Mode, Press **OK** and you'll see option to "Set Torque" or "Set Torque and Angle" or "Just Move Preset"
2. If you are setting a Torque only preset see page 8 of these instructions.
3. Press **UP** or **DOWN** To select select "set Torque and Angle" and press **OK** when highlighted green
4. Press To select the Preset number you want to use and press **OK**
5. Press **UP** or **DOWN** to select your preset Torque and press **OK**
6. Press **UP** or **DOWN** To set the Angle preset Value and press **OK**
7. Press **MENU** to go to Preset menu
8. Press **UP** or **DOWN** to select the Preset location
9. Press **OK** to select your required Preset and take measurements
10. Press **OK** to store the readings you are taking



### 3.8 Set Mode – Torque

1. Press **MENU** to Scroll to Set Mode
2. Press **OK** to select and **UP** or **DOWN** to select type of Preset, Set Torque or Torque and Angle
3. Press **OK** to select Torque
4. Press **UP** or **DOWN** to select Set by % or Set by Tolerance
5. Press **UP** or **DOWN** to Scroll to required Preset No. (1 to 99)
6. Press **OK** to Confirm Preset No. selected
7. Press **UP** or **DOWN** to Set Nominal Value and press **OK**
8. Press **UP** or **DOWN** to Set Your Low Value and press **OK**
9. Press **UP** or **DOWN** to set your High Value and press **OK**
10. Use **MENU** to select Preset from the menu to use this set-up



To set a Preset as a +/- % Deviation of the Nominal Value, Please select "Set Torque" and then select "by %"

### 4.2 Torque and Angle Calibration

1. Immediately after the regular Calibration the user is prompted to "wait" - the Gyroscope is doing a self test at this stage
2. The user is then prompted to rotate the wrench by 180 degrees and press **OK** to complete the calibration

### 4.3 Communication to PCFE

#### To Establish Communication with the Wrench - Using RS232 Cable

1. Place the RS232 Cable in the COM 1 PC Port. Note: Available PC Port configurations may vary. It is important that communications are attempted with the correct PC Port. The PC Link has been designed for connection with the standard 9-Way D-Type PC Port.
2. Place the other end of the cable into the wrench Jack Plug socket.
3. Switch on the wrench by pressing any button on the wrench. Select the correct Com port on the PCFE. Now the PCFE will automatically connect to the wrench and the screen will fill with data from the wrench
4. When you are finished communicating with the wrench, remove the cable from the wrench.

### 4.4 Communication using USB Cable

1. The installation checks the PC for the .net framework and installs it from the web if required.
2. Install the USB driver - It can be found at C:/program files/PCFE/Front-end/USB drivers. After PCFE installation, the PC wizard will ask you to install this driver for the new hardware
3. The PCFE Icon is on the desktop, the password is "master" - you can re-size the screen and it will remember this setting on next time of opening.

#### **The PCFE communication operates as follows:**

Firstly connect USB cable to PC and to the Wrench or screwdriver and power up the tool. Open the PCFE with "master" as the password, This password can be changed see page 16 Select Com port.

#### **there will be two options :**

1. Com Port 1 - this will allow you to connect the older type tools using the RS232 cable.
2. Com port x - it 's a virtual port and will vary from PC to PC.

**Note:** After you configure or view data on the Wrench and disconnect from PCFE, select Com port 1 afterwards to close the virtual port.

---

---

---

## 4.0 WRENCH CALIBRATION

Calibration is achieved using four Measuring Points, namely 10%, 20% , 60% and 100% of Maximum Span of the Wrench. In Calibration Mode the Wrench will automatically display these Measuring Point Values initially for the Right Hand and then for the Left Hand. All Products should be 1% accurate.

Calibration Mode is only accessible through the Master & Distributor Versions of the PC Front End. The End User cannot access the Calibration Mode. Please ensure that certified calibration systems such as a Norbar ISO 1000 Transducer system are used when calibrating the Torque wrenches, These devices are themselves accurate to 0.25%

**Note:** De-stressing wrench implies that the wrench is torqued to it's maximum span

### 4.1 Calibrate Mode

Note: Ensure date & time on wrench are correct

1. Connect wrench to PCFE software and Click the Activate Calibrate Button
2. Press **MENU** on the Wrench to scroll to Calibrate Mode. Place Wrench onto Calibration Unit. De-stress on the CW (Clockwise) direction
3. Press **OK** to activate Calibrate Mode (The Wrench OLED will now display a reading of 10% of the Maximum Span of the Wrench)
4. Apply Torque to the Wrench until the Reading on the Calibration Rig is equal to the Reading on the Wrench (10% of Maximum Span)
5. Press **OK** to confirm that the First Point of Calibration is now set
6. Now Measurement Point No.2 (20% of Maximum Span) will appear on the Wrench OLED Display. Therefore repeat Steps No.4 & No. 5
7. Now Measurement Point No.3 (60% of Maximum Span) will appear on the Wrench OLED Display. Therefore repeat Steps No.4 & No. 5
8. Now Measurement Point No.4 (100% of Maximum Span) will appear on the Wrench OLED Display. Therefore repeat Steps No.4 & No. 5
9. Repeat Step No's 1 to 8 for the Left Hand calibration
10. Once calibration is complete select Trac mode on wrench. On the Left hand side check wrench accuracy at 20%, 60% and 100% according IS06789-2003. Now De-stress on Right hand side and repeat step 10

---

---

---

## 3.9 Set Mode - Just Move Preset

This allows the user to change the default Just Move Angle to any Angle between 1 and 10 degrees - The operator Can do this using the PCFE or using the Wrench.

1. Press **MENU** to Scroll to Set Mode
2. Press **OK** to select and **UP** or **DOWN** to select Just Move Preset
3. Press **OK** to select Just Move once it's high-lighted green
4. Use **UP** or **DOWN** keys the to select between 1 and 10 degrees and press **OK**
5. Use **UP** or **DOWN** to select Just Move and the default angle will be changed

### 3.10 Just Move

This function will display the Torque that was applied after 3 degrees of movement, It will also show the final Torque and angle that were applied by the user. The screen will change to Red once the Just move Angle threshold is passed and the Buzzer will sound. The user can set the Just move degree in the "Set" menu option or using the PCFE software. The Final torque and final Angle that was achieved will also be displayed as shown. The default Just Move Angle is 3 degrees.

1. Press **MENU** to Scroll to Just Move Mode
2. Press **OK** to select Just Mode and then apply Torque and Angle
3. Press **OK** to store the 3 degree Torque Value and Final Torque and Angle value

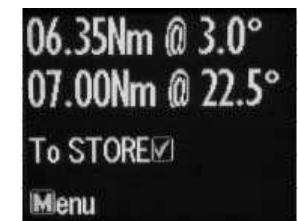
If Storage is not required then apply New Torque and Angle measurement



Just Move Default to 3 degrees



Just Move Measurement



Just move result

### 3.11 Just Angle

This function will display the Peak Torque and Peak angle that were applied during the Torque operation. The user can store the result at the end of each measurement.

1. Press **MENU** to scroll to Just Angle and **OK** to select
2. Take a Torque and Angle reading
3. Press **OK** to store the result or apply another torque to continue

### 3.12 Preset Mode

This Mode allows the User to take measurements based on the Nominal, TMax & TMin of Torque Settings with the relevant Warning Signals activated.

**Min Value:** The Green LED on keypad will Flash & the Buzzer will Sound intermittently. The OLED display will change to green.

**Nom Value:** The Green LED on keypad will switch on & the Buzzer will sound continuously, The OLED display will be Green.

**Max Value:** The Red LED will Flash continuously and the Buzzer will sound continuously and the OLED will change to Red.

### 3.13 Preset Mode - Keypad Function

1. Press **MENU** to Scroll to Preset Mode
2. Press **OK** to Enter Preset Mode
3. Press **UP** or **DOWN** to select your preferred Pre-set No. (1 TO 99)
4. Press **OK** to operate within this preset parameter
5. Press **OK** to store the applied Torque (Torque and Angle) if required.



### 3.14 Recall Mode

This mode allows the User to view the Stored Torque & angle Data. Only Locations containing data will be displayed. Note that as data is stored the locations are populated sequentially from 01 to 2094

### 3.15 Recall Mode - Keypad Function

1. Press **MENU** to Scroll to Recall Mode
2. Press **OK** to enter and view Memory Locations, Results and Functions
3. Press **UP** or **DOWN** to scroll through locations that contain data.



### 3.16 Upload Mode

This Mode allows the User to Upload Stored Torque Data from an individual or range of locations. In Upload Mode the Wrench must be connected to a PC running the PC FRONT-END Software (PCFE) via the USB Port on the Wrench and PC.

**Note:** The PCFE must have USB drivers installed for communication

1. Press **MENU** to scroll to Upload Mode
2. Press **OK** to enter Upload Mode
3. Press **OK** to select "From" and **UP** or **DOWN** to select the first location to upload
4. Press **OK** to confirm "From" location
5. Press **OK** to select "To" location and **UP** or **DOWN** for end location to be uploaded
6. Press **OK** to confirm, you are asked if your Sure press **OK** to confirm



### 3.17 Clear Mode

This Mode allows the User to Clear the Stored Torque Data from an individual or range of locations.

**Note:** Before clearing the selected range and as a safety precaution, the user will be asked are they sure they wish to clear selected data. This can be done by pressing the confirm button.

1. Press **MENU** to Scroll to Clear Mode
2. Press **OK** to enter Clear Mode
3. Press **UP** or **DOWN** to select "From" range to be cleared and press
4. Press **UP** or **DOWN** to confirm "To" range to be cleared
5. Press **OK** to confirm and you will be asked if your "Sure?"
6. Press **OK** to confirm and that Range of data is cleared from the wrench memory

# ETW

## DIGITAL TORQUE WRENCH



**ELECTROMATIC**  
EQUIPMENT CO., INC.  
600 Oakland Ave., Cedarhurst, NY 11516-U.S.A.  
TEL: 516-295-4300 • FAX: 516-295-4399